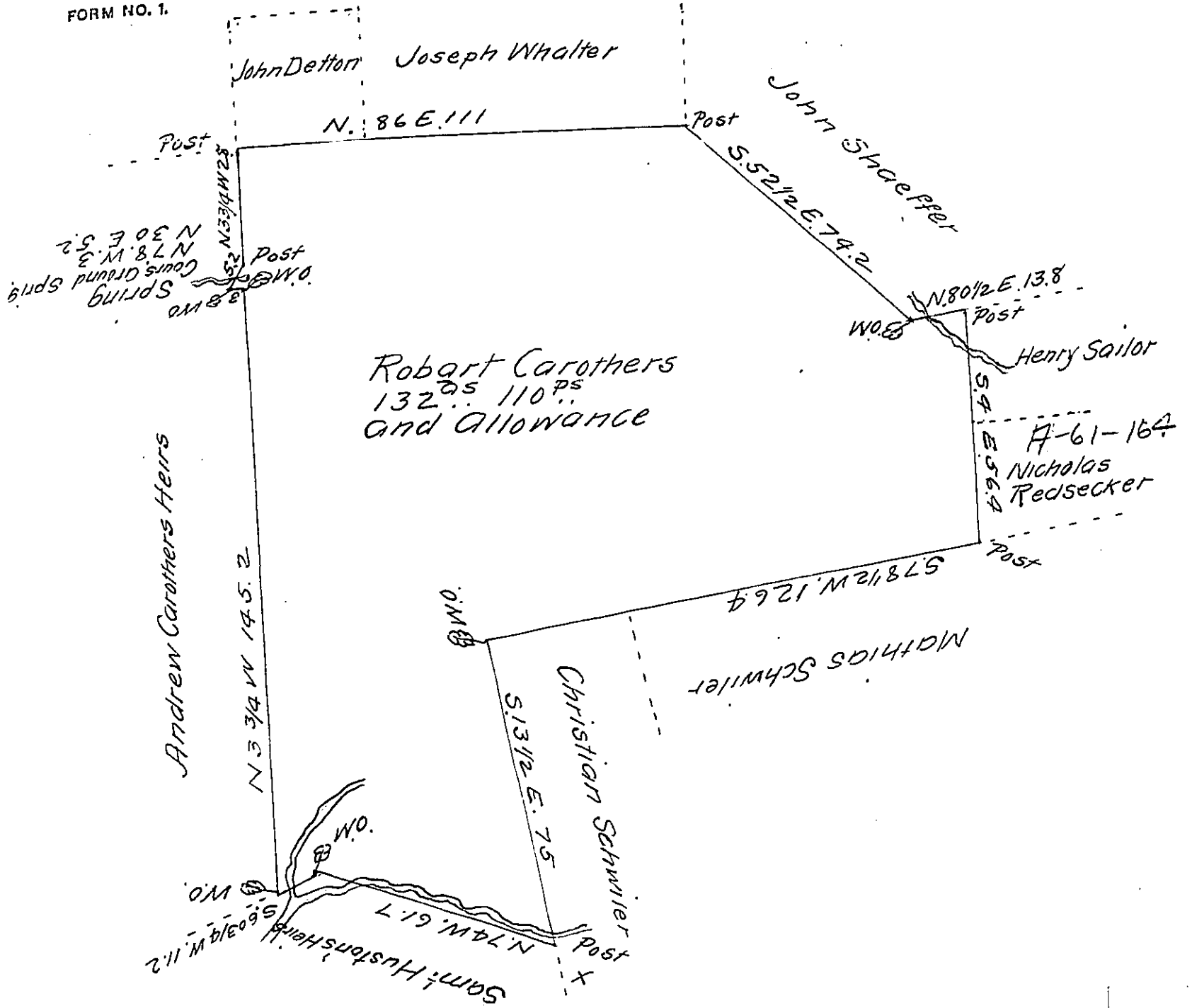


FORM NO. 1.



Draught of a Tract of Land situate in Eastpennsboro Township Cumberland County containing One hundred and thirty two Acres and one hundred and ten perches & the usual allowance of Six per Cent for Roads. Surveyed the 6th day of December A. Dom 1821 in puitsuance of a warrant granted to Robert Carothers dated the 3^d day of Aug^t. Anno Domini 1750

Samuel Ruby D.S.

To Samuel Cochran Esquire
Surveyor General

IN TESTIMONY that the above is a copy of the original remaining on file in the Department of Internal Affairs of Pennsylvania, made conformably to an Act of Assembly approved the 16th day of February, 1833, I have hereunto set my Hand and caused the Seal of said Department to be affixed at Harrisburg, this third day of April 1912

Nancy Howell
Secretary of Internal Affairs.